



35 Riverside Drive London, NW11 9PX

Welcome to Riverside Drive, London - a prestigious location that exudes elegance and sophistication. This penthouse apartment boasts not just one, but two spacious reception rooms where you can entertain guests or simply unwind after a long day. With a total of five bedrooms and three bathrooms, there is ample space for a large family or for those who love to host visitors.

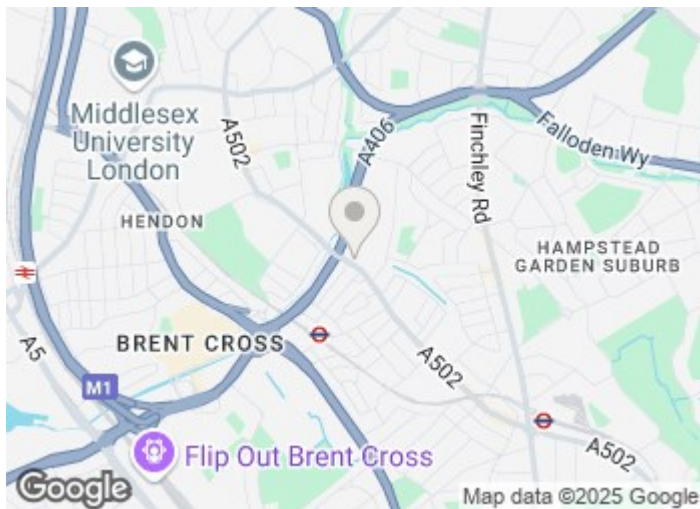
This property is truly a gem, offering almost 3000sqft of accommodation it offers a blend of modern amenities and classic charm. The master bedroom features an en-suite bathroom and a walk-in closet, providing a private sanctuary within your own home. The remaining bedrooms are equally spacious and well-appointed, ensuring that everyone has their own comfortable retreat.

Don't miss out on the opportunity to live in luxury in one of London's most sought-after neighbourhoods. Contact us today to arrange a viewing and experience the magic of Riverside Drive for yourself.

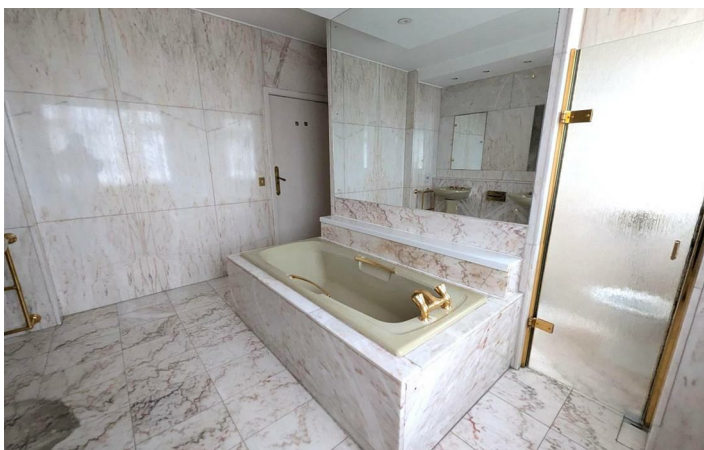
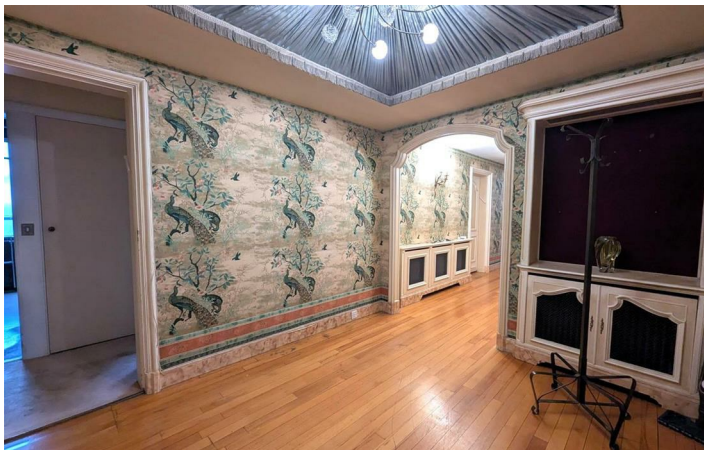
Offers Over £2,000,000

35 Riverside Drive

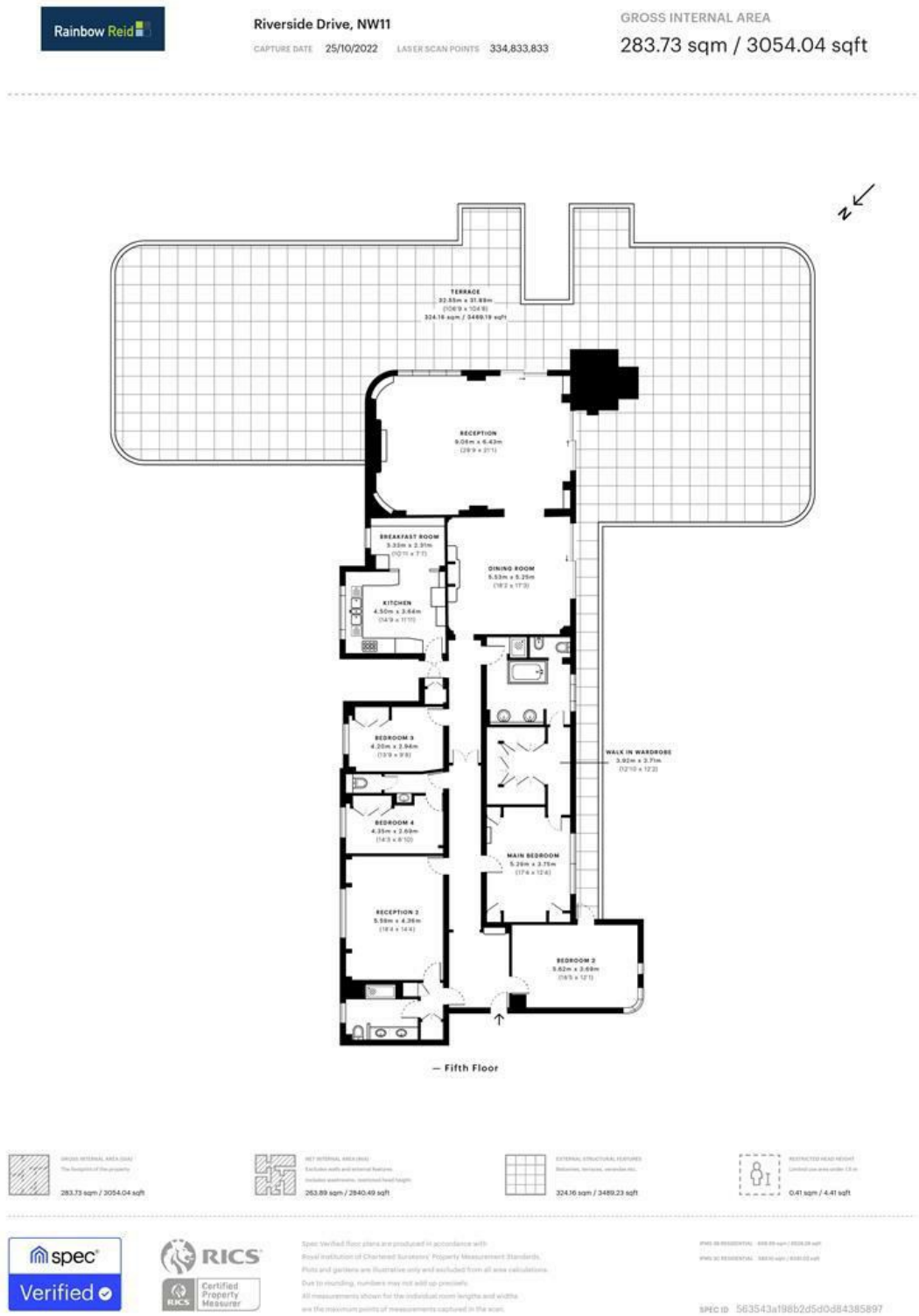
London, NW11 9PX



Directions



Floor Plan



These particulars, whilst believed to be accurate are set out as a general outline only for guidance and do not constitute any part of an offer or contract. Intending purchasers should not rely on them as statements of representation of fact, but must satisfy themselves by inspection or otherwise as to their accuracy. No person in this firms employment has the authority to make or give any representation or warranty in respect of the property.

Energy Efficiency Rating			Environmental Impact (CO ₂) Rating		
	Current	Potential		Current	Potential
Very energy efficient - lower running costs	(92 plus) A		Very environmentally friendly - lower CO ₂ emissions	(92 plus) A	
	(81-91) B			(81-91) B	
	(69-80) C			(69-80) C	
	(55-68) D			(55-68) D	
	(39-54) E			(39-54) E	
	(21-38) F			(21-38) F	
	(1-20) G			(1-20) G	
Not energy efficient - higher running costs			Not environmentally friendly - higher CO ₂ emissions		
England & Wales			England & Wales		
EU Directive 2002/91/EC			EU Directive 2002/91/EC		